

Johnson County ESD #1 MEDIA RELEASE

2451 Service Drive, Cleburne, TX 76033 ♦ office (817) 556-2212 ♦ metro (817) 558-2230 ♦ fax (817) 556-2221
www.johnsoncountyfire.org ♦ district@johnsoncountyfire.org

FOR IMMEDIATE RELEASE: (DATE HERE)

CONTACT #1: Jack Watson, Board President, 817-319-1845

CONTACT #2: Jamie Moore, JC Emergency Management Coordinator, 817-933-6261

WHAT: Johnson County Tornado Shelter / Safe Room Registration Now Available

Johnson County, TX – The Johnson County Emergency Services District (ESD) #1 has developed a Tornado Shelter / Safe Room registration for citizens that would like to register their shelter or safe room with the ESD.

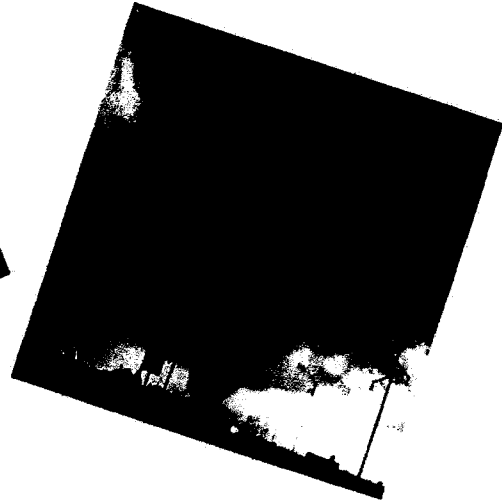
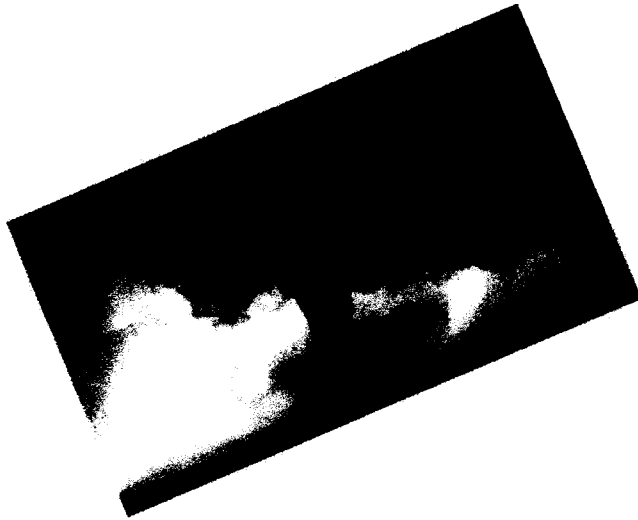
In the past, a central depository of this information has not existed within Johnson County. Knowledge of shelter locations will aid first responder as they attempt to locate those trapped in shelters after a tornado or severe storm.

Registration is strictly voluntary. Forms will be on the ESD website (www.johnsoncountyfire.org) so citizens may register their shelters. The information will only be given out to first responders during an emergency.

The form may be submitted via mail to the address listed on the form, or emailed to district@johnsoncountyfire.org. Additionally, they may be submitted in person at the district office (2451 Service Drive, Cleburne) of the Johnson County Emergency Management Office (810 E. Kilpatrick, Cleburne).

This information will be kept in the ESD Fire Dispatch Center and a back- up copy will reside in the Johnson County Emergency Operation Center.

Registration is available immediately!



Every year we are faced with Tornadoes in our area. Many individuals are installing safe room and storm shelters to protect their families. First responders, when dispatched into areas hit by tornadoes, need to know the location of the shelters to check on your wellbeing. Tornadoes may have left debris covering shelters, hiding shelters and the occupants from first responders.

Johnson County ESD requests that you fill out the short information sheet so that we may enter this in our dispatch center database. First responders would then be better prepared to assist you and your family.

JCESD # 1 TORNADO SHELTER / SAFE ROOM REGISTRATION FORM

Address of Safe room/storm shelter: _____

GPS coordinates of the shelter: _____

In ground shelters – Approximate number of feet North, South, East, West of main home : _____

Above ground shelters – Location in home: _____
_____ If outside home approximate number

of feet North, South, East, West of main home: _____

Door opens in or out? _____

Material door is constructed of: wood, metal, concrete, other

Number of occupant's shelter may hold: _____

Any special medical conditions the first responders need to plan for: _____

Please fill out the registration form and then:

Mail to: Johnson County ESD #1
2451 Service Drive
Cleburne, TX 76033

Or Email to:

district@johnsoncountyfire.org

Recommended emergency supply kit could include the following items:

- Water, one gallon of water per person per day for at least three days, for drinking and sanitation.
- Food, at least three-day' supply of non-perishable food.
- Battery- powered or hand crank radio and a NOAA Weather Radio with alert tone and extra batteries
- Flashlight and extra batteries
- First aid kit
- Whistle to signal for help
- Dust mask to help filter contaminated air and plastic sheeting and duct tape.
- Moist towelettes, garbage bags and plastic ties for personal sanitation
- Wrench or pliers to turn off utilities.
- Tools to assist remove door if door fails to open
- Manual can opener for food
- Cell phone with charger, inverter or solar charger
- Shoes or boots to provide protection when walking on rough terrain